

# UNITING CHURCH CHILD and FAMILY CARE SERVICES



*The "Homes"*

## HERALD

NEWS FROM THOSE WHO CARE TO THOSE WHO SHARE

Offices at 10 Pier St. and 97 William St., Perth, W.A. 6000  
Phones 325 4366 and 322 6097

*Christmas Edition*

Vol. 2. No. 24

DECEMBER, 1978

## A SUCCESS STORY

It is always a delight to meet young people who used to be children in care at one of our Children's Homes. At our recent Fete we met such a family of four. It's nineteen years since they came into our care and nearly fifteen since they left.

This family group of four, the youngest only two, came into care as a result of the death of their mother. Only a few short years later the tragic death of their much loved father left them orphans. What an inauspicious beginning for a success story, and yet . . . .

At our meeting I found them all still united as a caring family, even though two had married and had children. There they were, the four of them, at our Fete; well groomed, relaxed, happy looking and meeting people who obviously were delighted to see them again.

How had they managed so well? To make a long story short, let's look at the story of just one of them. This lad qualified for a scholarship and seized his opportunity so determinedly that the next thing I knew he was attending University. He is now a qualified engineer, has worked overseas and is employed by one of the biggest engineering firms in Australia.

This was success . . . but even so, I suppose I was more impressed by their unity as a family group. After such a tragic start how did they achieve such success when all around us we see many families fragmented and shattered by a disillusioned society? There seems little doubt that the major credit must go to the four young people concerned. Without determination, and real character they could not have succeeded.

However, there is another factor that is all-important to us in this Christmas Appeal message; that is, the part played by one of the children's homes within the Uniting Church Caring Services. However determined and capable such children could easily fail if not given the right support at the time of emergency — their real need.

In this story we can take some satisfaction in the part played by our Children's Homes — YOUR Children's Homes! We work as partners and colleagues with parents and children and they frequently become our friends.

If this makes sense to you and you are pleased to be doing this important work of the Mogumber, Sister Kates, and Mofflyn Group of children's homes, then here is an opportunity to show it in a practical way.

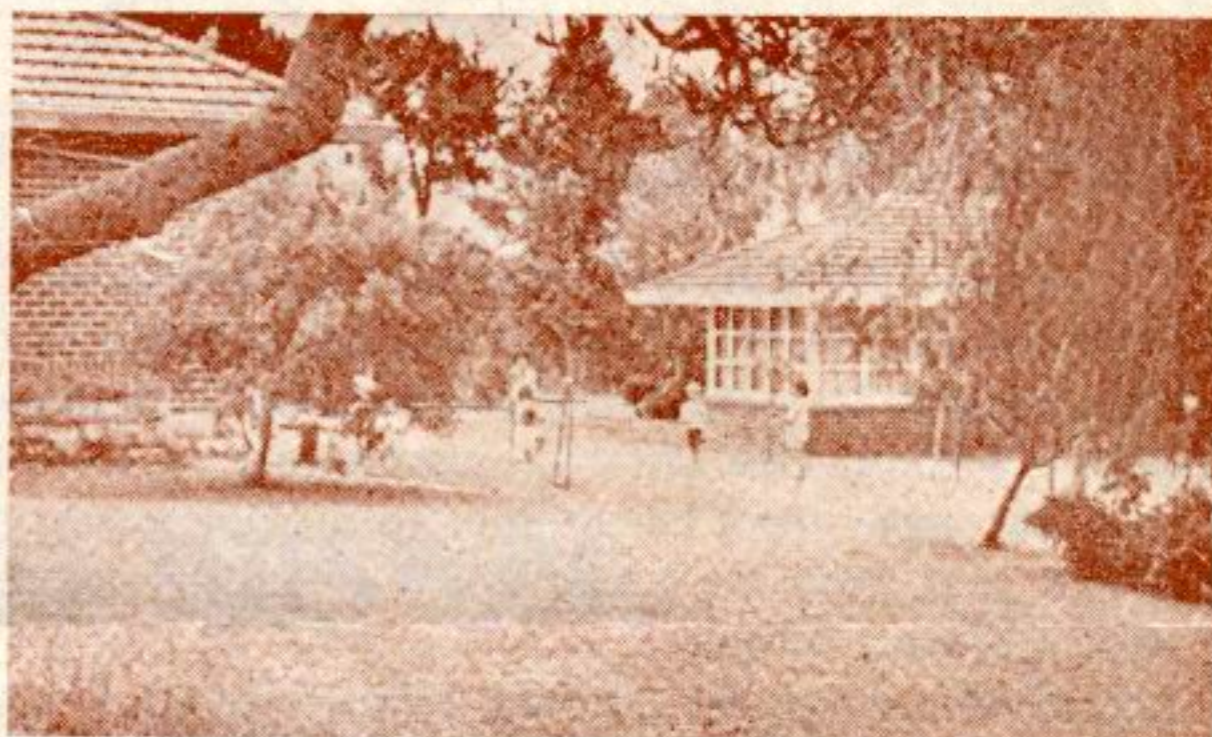
Between now and Christmas Day, literature will be forwarded to churches seeking support for our work. If you will be away on Christmas Day, or for other reasons wish to contribute now, please complete the donation slip on the back page and forward it and your donation to the address shown.

We hope that in this way you too will want to be part of further on-going success stories.

May we wish you a joyful Christmas of rich blessing.

Barry Preece; Albert Vanni, and Les Smith.  
ADMINISTRATORS.

NOTE: Permission was willingly given by the family concerned for us to use this story.



**Mofflyn Children's Home**  
Sussex St., East Victoria Park

# Answers to the questions

The following are answers by our three Administrators to questions often put to them:

## HOW DID YOUR CHILDREN'S HOMES WORK BEGIN?

Try and put yourself in the position of Katherine Mary Clutterbuck in 1933. You are seventy-two years of age. For fifty years you have helped others – seventeen in the slums of the East End of London, thirty years in the "Waifs Home" at Parkerville, and some time in early cottage home type work that commenced in William Street premises! You have just been awarded an O.B.E. and been retired on a pension. Would you then consider yourself a good prospect for starting a new children's homes work? Well, that's exactly what Katherine did – and at seventy-two years of age! With her friend Ruth Lefroy she found her place with near-white children drawn from Aboriginal camps around Western Australia and thus began the work now affectionately known as Sister Kate's.

Albert Vanni (Sister Kate)

## HOW DO CHILDREN COME INTO CARE?

It was 7.00 a.m. on a cool spring morning as I waited on the platform of the East Perth Westrail Terminal. How would I know which of the crowd stepping off the Indian Pacific train was the little girl I was to meet? Five minutes later my problem was solved, for walking towards me was a bewildered nine-year-old clutching her mother's hand. This attractive part-aboriginal child came and peered closely at me, the person who was going to take her away from her mother to provide a substitute home and parent figures for her during the rest of this school year. Why was I taking her? I had been approached by the Social Worker from Princess Margaret Hospital with a request to give this child a home so that she could attend a special school in the metropolitan area. This special school handles partially blind children. Our newest charge has an eye condition which doctors as yet have not completely diagnosed.

I took her out to one of our Scatter Cottages and introduced her to her new 'mother' who will have the responsibility to guide her through the next very trying months.

You too are helping in the care of this child. Thank you.

Barry Preece (Mogumber Training Centre)

## WHY IS THERE NO GOVERNMENT FUNDING FOR TERRACE HOUSE?

Firstly, under existing legislation and present circumstances it has not been funded by the State Government because,

- (a) its residents have left school and do not qualify for the various subsidies paid through the present residential child care funding system, and
- (b) even State wards, once they are receiving unemployment benefits, cannot attract ward subsidies or other subsidy benefits.

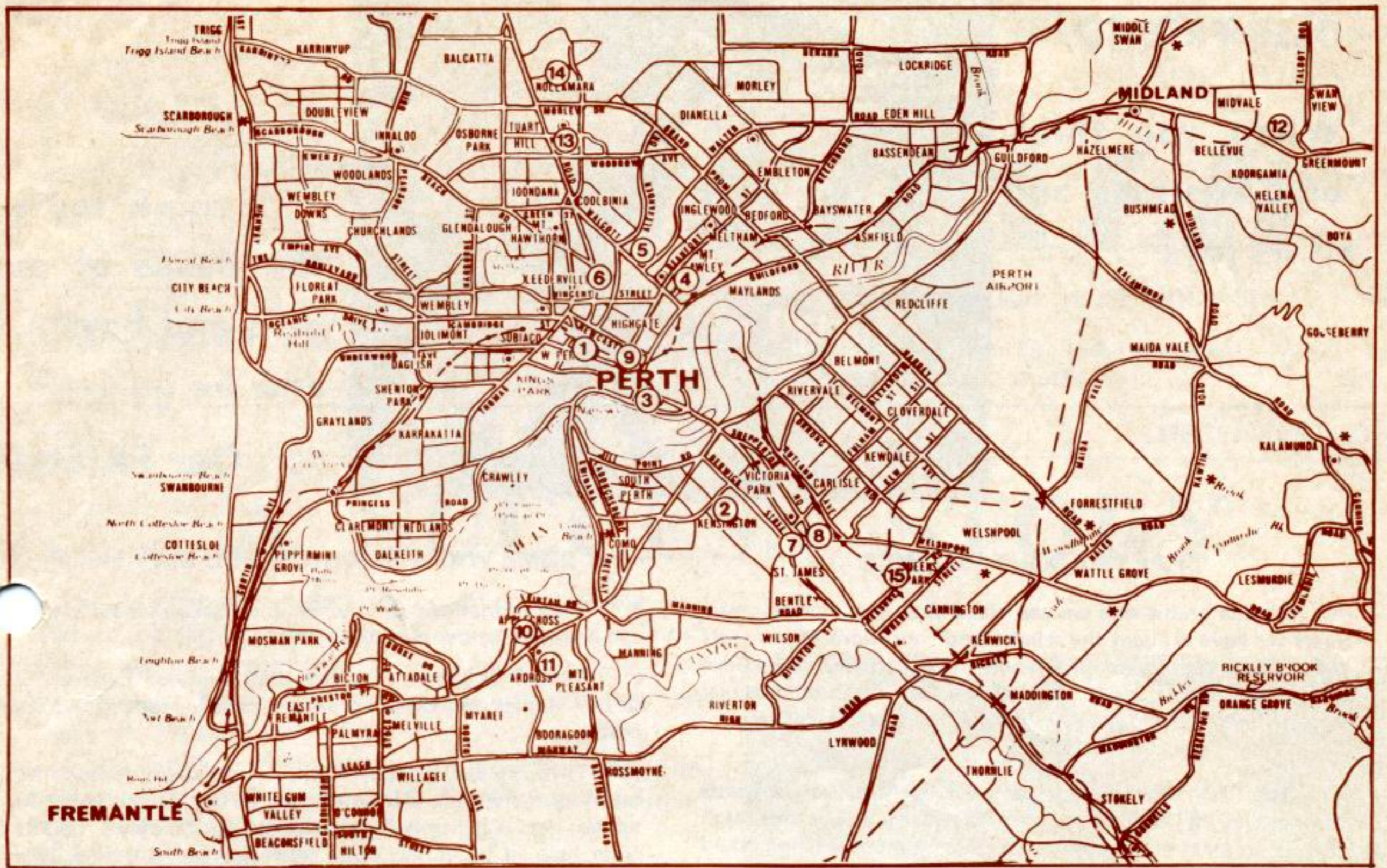
Secondly, it cannot be funded by the Federal Government because,

- (a) under the Homeless Persons Assistance Act, subsidy is limited to such facilities as night shelters, soup kitchens, day centres, detoxification units and other basic life maintenance units, and
- (b) in the words of Senator Guilfoyle, and I quote,

"I am conscious of the valuable help extended to young people at Terrace House but as it does not come within the present scope of the programme, funding under the homeless persons assistance programme is not possible."

Despite all this we are pressing on with discussions and new initiatives are a little more encouraging.

Les Smith (Mofflyn Group)



# Questions for You to answer

- \* Where are the residential child care facilities of the Uniting Church Caring Services? They are facilities of YOUR Church but – just how many do YOU know? (NOTE: The map above and key below will assist you to place them.)
- \* Which is the nearest facility to YOUR Church Parish?
- \* In what ways has your Parish assisted this facility of YOUR Caring Services?
- \* Are the staff and children friends of yours?

YOU WANT FURTHER INFORMATION PLEASE RING – SISTER KATES (458 2373)  
MOFFLYN ( 322 6097) MOGUMBER (325 4366)

## KEY TO THE MAP ABOVE

1. MOFFLYN GROUP OFFICE – 97 William Street, PERTH.
2. Mofflyn Homes – 145 Sussex Street, EAST VICTORIA PARK.  
(Scholar Kindergarten)  
(Werribee – 2 Jarrah Road)  
(Allandale – 149 Sussex Street)
3. Terrace House – 74 Terrace Road, Perth
4. Cooina – 24 Queens Crescent, Mt. Lawley.
5. Collins House – 41 Woodroyd Street, Mt. Lawley.
6. Bourkedale – 10 Bourke Street, North Perth.
7. Meribah – 4 Hillview Terrace, St. James
8. Warminda – 4 Welshpool Road, Welshpool.
9. MOGUMBER TRAINING CENTRE OFFICE – 10 Pier Street, Perth.
10. Applecross Cottage – 62 Matheson Road, Applecross.
11. Ardross Hostel – 7 Hallin Court, Ardross.
12. Greenmount Hostel – 28 Innmincka Road, Greenmount.
13. Yokine Cottage – 180 Lawley Street, Mt. Yokine.
14. Nollamara Cottage – 50 Carcoola Street, Nollamara.
15. SISTER KATES HOME AND OFFICE – 190 Treasure Road. Queens Park.  
(including Kindergarten)

Dear FRIEND,

When you think  
of Christmas and  
all its joys . . .



. . . think too of  
the needs of our  
girls and boys . . .  
and be . . .  
. . . Our FRIEND.

### FACTS ABOUT FINANCE

- \* On the credit side we can claim that over the past two years we have brought the salaries and conditions of our staff right up to a true para-professional level. However, we have had to pay a high price for this and over the past financial year suffered our biggest ever loss.
- \* The State Government pays a subsidy of 50% towards the salaries of child care staff; however this is not high enough to meet our needs and the Government is being asked to raise the rate of subsidy.
- \* As an incentive to the non-statutory agencies to use more professional staff, such as social workers and psychologists, the State Government provides a 90% subsidy.
- \* The failure of the Federal and State Governments to subsidise work with homeless and unemployed youth — such as at Terrace House — has caused losses so great that its future must be in doubt. However, an appeal to our churches for special help for this work has produced encouraging results.

### SOME WAYS IN WHICH YOU MAY HELP

- \* Your donations of new or good second-hand clothing can help reduce our clothing costs.
- \* Several churches forward their Harvest Festival gifts to our Homes and these have significantly reduced our food costs.
- \* Through our Holiday Host scheme many families have taken our children into their homes during the May, September and Christmas-New Year school holidays. This is a great help in providing some relief for our full-time, live-in staff. If you are interested let us know and try it out for a weekend first.
- \* If you are changing over to colour television, donate your black and white T.V. to one of our Homes.
- \* Other ways you may help —  
Send us — surplus fruit in season,  
— sports gear no longer required,  
— second-hand bicycles out-grown by your own children.
- \* Join our Children's Homes Men's Auxiliary and help with work parties. Ring Cec Florey 341 2996.
- \* Legacies help new work. Please remember us in your will . . . and your prayers.



\$ .

## CHRISTMAS APPEAL

"Inasmuch as ye did it unto one of THEM  
ye did it unto ME"

I gladly forward my Christmas Donation to assist in your work for needy, deprived and neglected children.

Name.....

Address.....

Parish.....

To Children's Homes Christmas Appeal,  
Uniting Church Office,  
10 Pier Street, Perth, 6000.

All donations over \$2.00  
are deductible for Income  
Tax purposes.