

# Methodist Homes for Children in Western Australia

The "Homes"

## HERALD

NEWS FROM THOSE WHO CARE TO THOSE WHO SHARE

Director: Mr. L. E. Smith, Methodist Homes for Children, 97 William St., Perth  
Phones 21 7957 and 22 6097

Christmas Edition

Vol. 2. No. 20

DECEMBER, 1974

# The AGE of INSECURITY?

In his book "Future Shock", Alvin Toffler provides convincing proof that we live in a world of tremendous change. Even the rate of change is accelerating — and it is becoming increasingly evident that contrary to all predictions, in a period of unsurpassed technological advancement, mankind is becoming more and more insecure.

Recently I had a hurried check of the main factors causing the admission of children to our "Mofflyn" Children's home, and found there ample evidence of this increasing insecurity. Again this year over 25% of our children were admitted because one of their natural parents was undergoing psychiatric treatment. Even allowing for the "greater facilities available" argument, the increase is considerable and quite disturbing. The other main factors — inadequate parents, cruelty and desertion, unmarried mothers — all reflect this same sense of insecurity. Alcoholism of course has always been a big factor, but seldom have we had so many cases involving "de facto" relationships.

For the first time for many years, we find this insecurity showing up in greater staff turnover with consequent shorter length of stay and, of far greater importance, less stability for the children for whom we care. Because of this we must stress the importance of a caring Church providing from its ranks suitable Christian women to fill cottage mother vacancies as they arise.

**THIS IS OUR NUMBER ONE PRIORITY!**

Now for the good news. Following on our "challenge" of last year, 1974 has been our best in memory for donations towards our work. Thank you for this wonderful response. However costs are continually rising so we appeal to you to maintain this improved rate of giving by making this Christmas Appeal for the Methodist Homes for Children just as successful as last year.

Thank you for your past kind support in so many ways, and a Happy Christmas to you all.



**"DOWERIN"**

One of the four brick and tile cottages at "Mofflyn"

Yours sincerely,

L. E. SMITH (Director).



**ALLANDALE BOYS COTTAGE**

## **MOFFLYN**

**Sussex St. East Vic. Park**

A cottage home settlement of four cottages caring for children aged two to twelve. Each cottage cares for a maximum of ten children, boys and girls, and full age range. This means that "Mofflyn" is often one of the few places capable of keeping a large family of children together. Food is cooked in a central kitchen, taken over to a food warmer in the cottage and then served to the children as a family, the cottage mother having her meals with the children.

## **SCHOOLAR KINDERGARTEN**

Our pre-school children, plus 15 to 20 outside children receive stimulating Kindergarten training in a well-equipped centre situated at "Mofflyn". Special attention is given to children with learning difficulties — such as speech defects — and the amount of remedial work done here is increasing.

## **WERRIBEE**

**2 Jarrah Rd. East Vic. Park**

Situated within the boundaries of Mofflyn — to facilitate contact with siblings — Werribee provides on-going care for girls after they reach (approx.) High School age. A room is provided for a live-in teacher who, for free board and lodgings, provides homework supervision for the girls.

## **ALLANDALE**

**149 Sussex St. East Vic. Park**

Similarly when boys at Mofflyn reach 9 or 10 years of age and begin to show signs of needing a "father-figure" they are moved down to "Allandale", a house-in-the-street, independent of Mofflyn, and with house-parents in charge, with the man going out to employment in the community.

# **The WORK**

The various facilities in which we care for children from broken and disturbed homes.

## **COOINDA**

**24 Queens Cresc. Mt. Lawley**

Cares for ten teenage High School or working girls, either Aboriginal or European. Usually they are State Wards and come from family or school situations where stress has caused misbehaviour and/or absconding. Again a man and wife are in charge.

## **WARMINDA**

**4 Welshpool Rd. East Vic. Park**

This home cares for ten school aged boys and girls, usually State wards from "Bridgewater" Assessment Centre. As with Cooinda this lovely home is in the care of a married couple.

## **MERIBAH**

**4 Hillview Tce. St. James**

This scatter home cares for six school aged boys and girls who as a general rule have a greater degree of emotional disturbance and require considerable individual care. Management of this attractive home is entrusted to specially selected house parents.

## **BOURKEDALE**

**10 Bourke St. North Perth**

This is probably our home that comes closest to a normal private home. With a man and wife in charge it cares for a maximum of nine of our least disturbed school aged boys and girls, and is generally referred to as a "scatter-home".

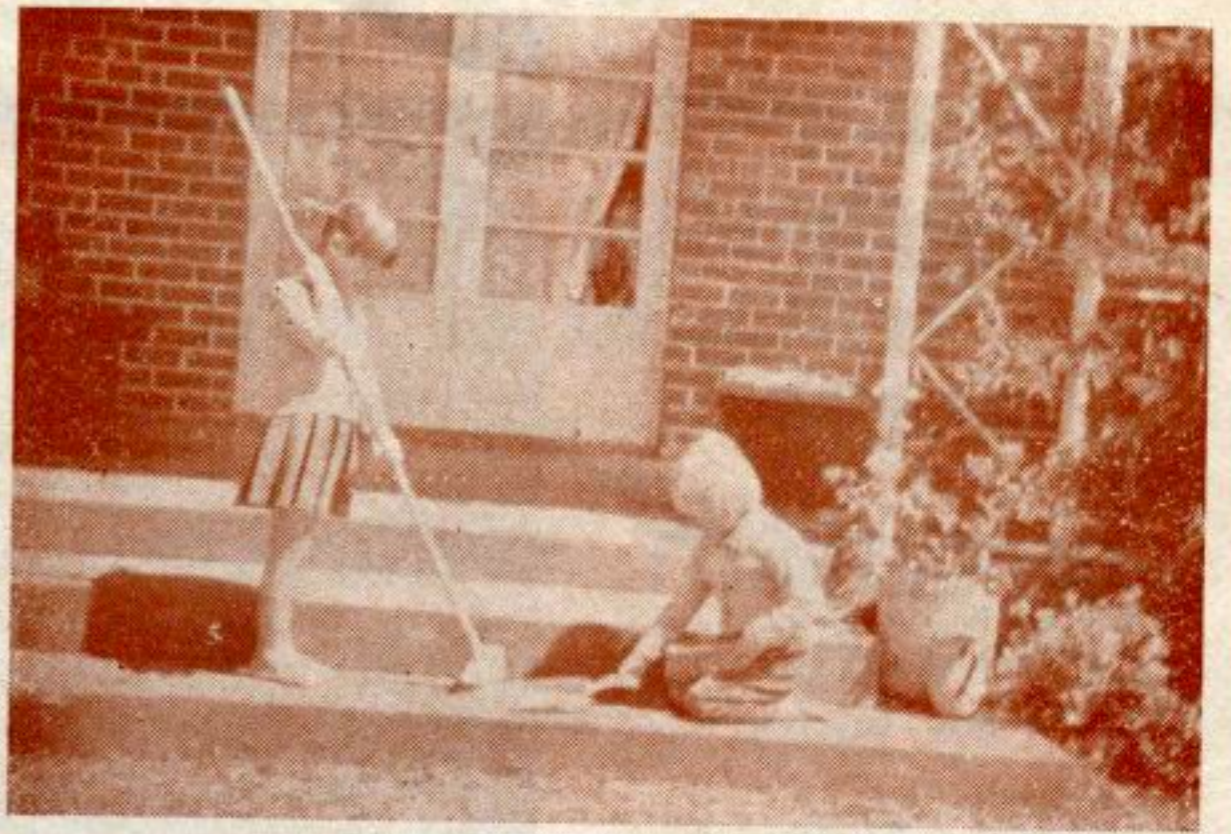
## **HEAD OFFICE**

**97 William St. Perth**

This is the administration centre of the Methodist Homes for Children. It has purposely not been centred at "Mofflyn" in order to avoid an "institutional" environment.

# The WORKERS

The Staff and Service Groups that together form a wonderful team of dedicated Christian Workers.



"MUM'S" WILLING WORKERS

## STAFF

Almost, if not all staff are people with a good Christian background. They are obviously dedicated to the task of caring for needy children as the salaries we are able to pay would be little more than that paid to missionaries. Despite this we are most fortunate to have recruited a splendid staff team, doing work of a surprisingly high standard, as evidenced by the good results being achieved.

## LADIES' GUILDS

Because they supplied the capital cost, one of our cottages is named "Guild" and their Guild Cottage Fund still finances the maintenance cost of this lovely, homely cottage. In addition many Guilds do sewing and mending, and members take children out at weekends.

## HOLIDAY HOSTS

Many good people from the community complete one of our holiday host forms and then receive children from one of our homes into their private homes over weekends or school holidays. This is a tremendous help to children and staff.

## LOCAL SECRETARIES

In most Churches we have a representative known as the "Local Secretary". They receive and forward all donations and pass on to their people the latest news of the Children's Homes. They organise Street Appeals, stalls, outings for our children, and many other activities to swell our funds and help our children.

## CHURCHES

Many Churches make periodic donations and help tremendously with gifts from Harvest Festivals — particularly tinned goods or packet foods. Also by Conference direction Christmas Day service collections are forwarded to the Children's Homes.

## LADIES' AUXILIARY

Composed of representatives of Ladies' Guilds, this hard-working group supplies the essential support that agencies such as ours so badly need. They meet special service needs — such as organising the children's Christmas party, or afternoon teas for our Visitors Day — and raise considerable funds through Stalls, a Musicale, and a Fete, etc. Their Fete this year raised a record-breaking \$2,353; a splendid effort indeed!

## MEN'S AUXILIARY

Recruited from almost anywhere — "press gang" tactics included! — this fine group has provided the "muscle" needed for our work. For instance, besides the constant painting and maintenance work parties, this year they have installed a tricycle pad for the younger children. Their latest effort is in fund raising, and it is a competition known as "MOFFLYN CRYPTIC TOWNS." You are asked to obtain entry forms from your local church — your Local Secretary will have some — at a fee of 20c per form. The contest closes on 31st December and results published in the "West Australian" Tuesday 14th January. First prize is a Pocket Transistor Radio and a Folding Garden Chair.

## AND YOU?

Some of the ways in which the individual can become one of our valued "workers" is to —

- Take our children into your home for a week-end, or the Christmas-New Year holidays. (Phone 61 1067)
- Send us your secondhand children's clothing.
- Send donations of fruit. (Note — This and clothing can be railed freight free if marked "Donation".)
- Take one of our money boxes. Your local secretary can provide one.
- Complete the "Christmas Appeal" donation form overpage.

**CHRISTMAS**  
 is your  
**OPPORTUNITY**  
 to help  
**OUR Children**



**"MISCHIEF AT MOFFLYN"**

Where needy children from disturbed and broken homes are given a new chance in life in our Cottage Homes.

**Christmas Day**  
**Collections are**  
 for the  
**Children's**  
**Homes**

**DID YOU KNOW THAT**

● The average cost per child per week of all voluntary residential child care agencies in 1972 was \$25.51. However even a year later, 1973, ours was still only \$17.10. Why is this so?

On the credit side we believe we can claim a most economical and efficient administrative system, and the staff in charge of our agencies are generally good "house-keepers." Then too your great help with Harvest Festival gifts and clothing have assisted greatly in keeping these costs down.

However on the debit side it could reflect our inability to recruit a qualified social worker, and pay more adequate staff salaries.

● Our plans for improvements at "Mofflyn" include the provision of new lighter floor coverings in the childrens bedrooms, and some tiling in their bathrooms.

● This year we helped Child Care staff in the Kimberleys by holding our Annual Seminar at Broome.

● Remember — we have a cool room at Mofflyn, where the best use can be made of gifts of perishables.

We are always grateful for gifts of second-hand bicycles for boys or girls — particularly the 26 inch or smaller type.

● We are still searching for a full time live in cottage mother who will take on the job as a career — and stay!

● Young people in the metro area — can we challenge you to provide a modern kind of Sunday School for our "Werrabee" girls, and "Allandale" boys? The Soul Hole group have done it for nearly two years and done a fine job, holding it in a garage, sitting on cushions and using guitars for musical accompaniment, etc. This was good. But they are unable to continue.

Is there another group capable of taking over? Please ring me on 61 3635 after 6.30 p.m. (Note: If you cannot do this, what about taking Werrabee girls out at week-ends on a regular basis?)

● Children failing in foster care often come to "Mofflyn" and the cottage-homes system "does the trick". It is particularly suited to this kind of work.

● One need in 1975 will be a teacher for "Werrabee" Girls Cottage, who for free board and lodgings will provide homework over-sight for our girls for one and a half hours each night Monday to Thursday.

● Please help us in our work by remembering us in . . .

. . . Your Prayers

. . . Your Will.



**CHRISTMAS APPEAL**  
**"Inasmuch as ye did it unto one of**  
**THEM ye did it unto ME"**

I gladly forward my Christmas Donation to assist in your work for needy, deprived and neglected children.

\$ .

Name .....

Address .....

Circuit .....

To the Secretary,  
 Methodist Homes for Children,  
 2nd Floor, 97 William Street, Perth, W.A. 6000.

All donations over \$2.00  
 are deductible for Income  
 Tax purposes.