



Methodist Homes for Children in Western Australia

The "Homes"

HERALD

NEWS FROM THOSE WHO CARE TO THOSE WHO SHARE

Secretary: Mr. L. E. Smith, Methodist Homes for Children, 97 William St., Perth
Phone: 21 7957.

Christmas Edition

Vol. 1, No. 12

DECEMBER, 1966

AN EMPTY STOCKING . . .

HOW WOULD **YOU** LIKE YOUR STOCKING TO BE EMPTY THIS CHRISTMAS?

WELL . . . **OURS** COULD BE UNLESS WE RECEIVE HELP.



IT'S LIKE THIS . . . For several years now our Children's Homes Dept. has, by order of Conference, received the collections from Christmas Day Services. BUT — this only applies when Christmas Day falls on a day **other than Sunday**, and this year the **25th** is a Sunday. Therefore we receive none of these collections unless the local Church should decide otherwise. As few are likely to do this, we are making this **SPECIAL** appeal to the individual for greater help this year to offset the loss of the Christmas Day Service collections. Ironically enough we need this help even more than in recent years as during the past year the number coming under our direct care has grown from 48 to 65 and during the next 12 months should increase still further to a potential 86. There is every likelihood that this will eventuate too as we have no vacancies whatsoever at present and enquiries for assistance are still being received.

Please read the rest of this bulletin and if you feel we are doing our best, then please do yours by filling the stocking-envelope accompanying this and putting it in the collection plate at your Church, or handing it in to our Local Secretary or your Minister.

Thank you for reading this far, and may your Christmas be a truly happy one.

Yours sincerely,

L. E. SMITH,
(Secretary).



Hostel at 24 Queens Crescent, Mt. Lawley

PROGRESS

Hostel: Mt. Lawley — Five very fine young teenage girls have taken up residence in our hostel for aborigine and part-aborigine girls working in Perth. This number will be increased to a maximum of fourteen as soon as modifications have been completed by the Public Works Department. This new venture in co-operation with the Native Welfare Department seems to have got away to a good start and Mr. and Mrs. Lincoln McCashney, the house parents, report most favourably on progress to date.

The Native Welfare Department supplied the solid brick and tile home situated in a very attractive part of Mt. Lawley. They also supplied good quality furniture, cutlery, kitchenware, etc. and we took over from there. Our job is to supply a homely place where the girls, at very reasonable cost, can obtain all the help and friendship they need.

They have formed a basketball team and were most elated at easily winning their first two matches. We welcome these new members with friendship and prayers for a happy future.

New "Allandale" Boys' Cottage—This exciting new landmark in child-care commenced operations in October, and already all vacancies have been taken! It is an attractive modern brick and tile building erected in Sussex Street, outside the boundaries of Mofflyn so that it looks very much like another house in the street. The house parents are a Mr. and Mrs. Rice, with Mr. Rice going out to his normal employment just like any other father.

And what has paid for all this you ask. I will tell you.

Werribee Farm — As approved by Conference we have realised on the improved assets of

OUR STORY OF PROGRESS and PLANNING

Werribee Farm. As the profit this year to 31/3/66 was again double that of last year we were able to realise a good figure on this fine farm which will now be used as a University Research Centre probably for veterinary research. The money received has paid off our overdraft, fully paid for the new boys' cottage, and should pay for the new cottage for girls of high school age, to be built soon.

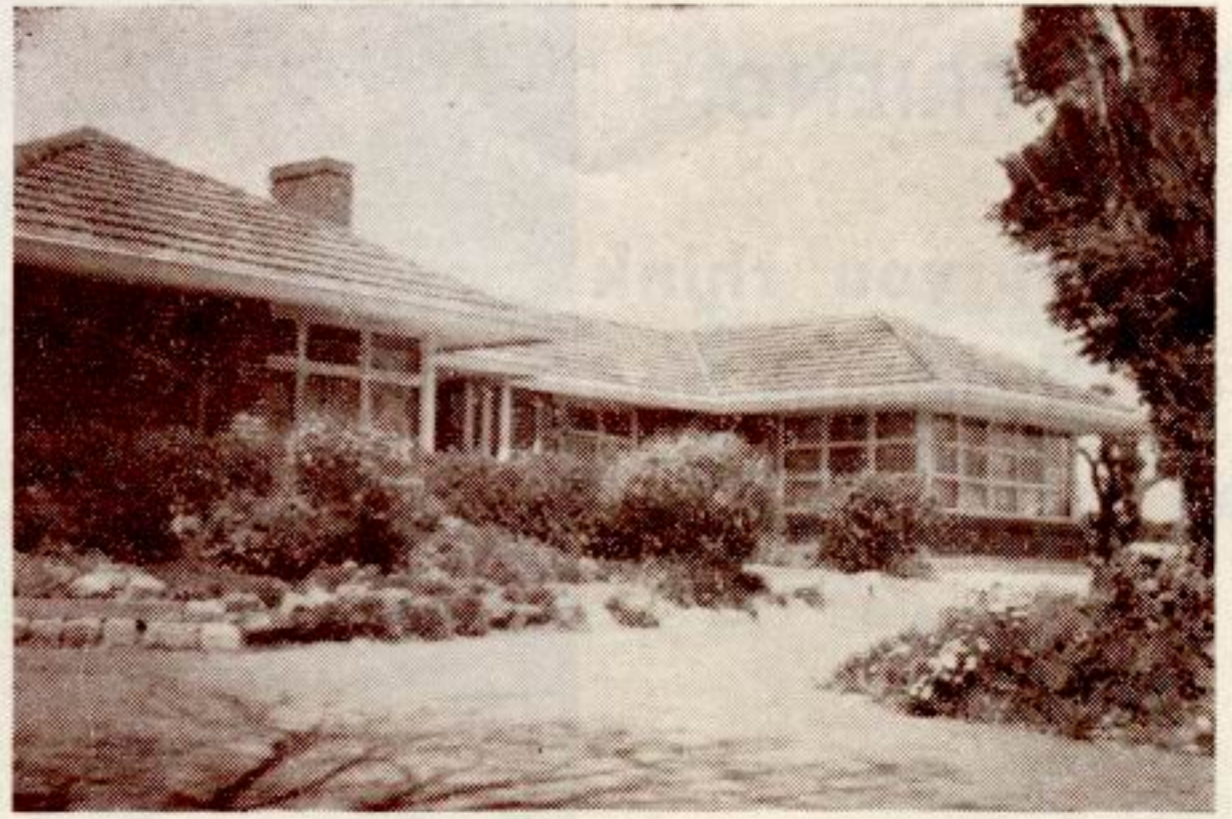
PLANNING

New Girls' Cottage — Plans have been drawn up, approved and tenders accepted for our new girls' cottage. The successful tenderer, Mr. Ron Turner, will commence building at the end of November. This new cottage should provide improved study facilities for our girls of high school age, and when it is completed about next May will be capable of accommodating a further twelve girls.



Attractive Bedroom Scene at the Mt. Lawley Hostel

YOUR STORY OF PEOPLE and PLACES



DOWERIN COTTAGE

One of four brick and tile cottage homes at "Mofflyn".

The following are a few hurriedly chosen examples of ways in which we have received help from many people:—

ALBANY — Christmas service collection \$100. Has best Country Street Appeal result each year of about \$140.

APPECROSS-MT. PLEASANT — Lady grows pot plants for our annual Fete. Another donated a writing desk for our new Allandale Boys cottage.

BASSENDEAN — Local Secretary is 87 years of age, yet Church contributions increasing by about 10 per cent each year! Good work. Ex-Mofflyn girl is member of choir.

BEAUFORT CIRCUIT — Christmas service collections \$202.

BOULDER — Queens Church Ladies Club annual rag drive still brings in nearly \$100.

BRIDGETOWN — Local Secretary helps by duplicating all our "Herald" quarterly bulletins.

BUNBURY — Harvest Festival goods sold and proceeds of \$56.84 sent to Children's Homes.

COLLIE — Guild ladies sewed clothes for each individual child according to age, size, colour of hair, eyes, etc.

COTTESLOE — Lady gave sewing machine for use in our homes.

DONNYBROOK — Orchardist sends us apples for Fete toffee apples each year.

DOODLAKINE — Fine individual gift of new childrens clothing — always most welcome!

GERALDTON — Local Secretary proved use of Children's Homes money-boxes an effective method of support—30 boxes averaged \$2 each. Grand effort!

GINGIN — Local Secretary collected nearly \$20 from friends—fine effort for small circuit.

GNOWANGERUP — Church member in Derby at Christmas posted down his Children's Homes gift. It's nice to be "not forgotten".

HARVEY and MOORA — Hold Street Appeals with excellent results.

KENDENUP — Conducts annual street stall to raise funds for our work.

KOJONUP — Sunday School arranging hosts for Mofflyn children over a long week-end. Apart from individual donations this Home Mission Station forwards \$96 circuit donation annually — this is real service to wider Church!

MANDURAH — Each year ladies arrange picnic for our children which is a real red letter day!

MANJIMUP — Guild organised a used clothing drive that helped us considerably.

MECKERING-CUNDERDIN — Sunday School sent down gift of wrapped toys. Many other kinds of real assistance received.

NAREMBEEN — Grand Sunday School donations over last two years averaged \$20!

NEDLANDS — Best single Church Christmas Day service collection of \$111!

NORSEMAN — Sunday School toys "All the way, from M. R. Jay!"

OSBORNE PARK — Young people did grand job mowing lawns, gardening, etc., preparing Mt. Lawley Hostel for use.

ROCKINGHAM — Each year ladies have given great service in Street Appeal collecting.

SCARBOROUGH — Men paint our cottages—Ladies picnic our children on the beach.

SOUTH PERTH — Circuit Christmas Day service collections \$192.

UPPER AVON — Splendid individual donations, and generous Christmas holiday accommodation for our children by many members make this a fine Children's Home supporter circuit!

. and so on.

Our thanks to you all.

If **YOU** can't beat these — then **JOIN THEM!**

Dear **FRIEND,**

When you think
of Christmas and
all its joys . . .



. . . think too of
the needs of our
girls and boys . . .
and be . . .

. . . **Our FRIEND.**

FACTS ABOUT FINANCE

(Period 12 months ending 31/3/66)

Did you know that

- Despite economies it cost \$10.70 per week to keep a child at Mofflyn.
- Parent or Guardian pays average of \$4.50. We have to raise the rest. (Donations, Street Appeals, Fetes, Legacies, etc.)
- Donations of \$2 or more are deductible for Income Tax purposes.
- Salaries and wages alone cost our Children's Homes \$11,944 and next year this will rise to \$14,000.
- Without legacies we would rarely balance our budget. Please remember us in your will.
- Last year 33 Churches (including 11 country ones) sent us Harvest Festival gifts — a great help.

SOME WAYS IN WHICH YOU MAY HELP

- Interest your friends in our Children's Homes at "Mofflyn" and "Allandale" and our new Mt. Lawley Hostel.
- Gifts for the pantry always acceptable — jams, preserves, fruit, groceries, etc. Phone 61 1067, 6 3826 or 71 4652.
- Arrange to have a child in your home for the Christmas-New Year school vacation.
- Arrange for a Children's Homes speaker for your Guild, Society or Club.
- Send us your out-grown or discarded clothing — we'll find a way to use it.
- Remember the Methodist Homes for Children in your will.
- Pray for our Homes.



CHRISTMAS APPEAL

**"Inasmuch as ye did it unto one of
THEM ye did it unto ME"**

I gladly forward my Christmas Donation to assist in your work for needy, deprived and neglected children.

\$

Name.....

Address.....

Circuit.....

To the Secretary,
Methodist Homes for Children,
2nd Floor, 97 William Street, Perth.

All donations over \$2 are
deductible for Income Tax
purposes.