

Barton's Mill Prison

1942 – 1975

Details

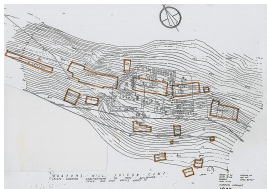
Barton's Mill Prison originally functioned as a timber workers' camp. In 1942 the military requisitioned Fremantle Prison at short notice, leaving authorities with no option but to find another location for the inmates. Barton's Mill was chosen, initially housing all prisoners until escapees and those considered a maximum security risk were returned to Fremantle.

Young male offenders were placed at Barton's Mill Prison in conditions that were considered by many at the time to be inappropriate and dangerous. Boys were reportedly locked into rooms individually at night, however [accounts from a superintendent at the time](#) state that there was no segregation between any of the inmates, or between inmates and boys despite sexual and other serious offenders being present in the prison population.

Following a number of articles in the West Australian about conditions at the prison, an [inquiry was called](#) into housing boys at the prison. Sexual abuse of boys at the prison was alleged in the [Royal Commission Appointed to Inquire into the Care and Reform of Youthful Delinquents](#).

The prison closed in October 1975.

Gallery



Barton's Mill Prison first layout 1942

Description: 'Barton's Mill Prison first layout 1942' is an image published by the Pickering Heritage Group on its website, *Barton's Mill Prison*. It shows what looks like a topographical map or site plan, with original mill buildings outlined in orange. There is a legend on the website, identifying the buildings.

More info

Related Entries

Related Events

- [Royal Commission appointed to Inquire into the Care and Reform of Youthful Delinquents, State of Western Australia \(1943\)](#)

Barton's Mill prison was inspected by members of the Royal Commission appointed to Inquire into the Care and Reform of Youthful Delinquents.

Date: 1943 -

Resources

- [Barton's Mill Prison](#), Pickering Brook Heritage Group Incorporated, 2019
 - [Address-in-reply \[Royal Commission on Child Delinquency 2\]](#), Hansard Archive 1870 to 1995, 26 August 1943.
Relevance: p.136
-

You can view this page online by visiting <https://www.findandconnect.gov.au/entity/bartons-mill-prison/>