

Fairholme

1952 – 1984

Other Names:

- Nat Harper Homes
- Nathaniel Harper Homes
- Fairholme Hostel

Details

Fairholme was established in 1952 as a home for 32 children 'of all ages' with intellectual disabilities who were transferred from the Claremont Mental Hospital. Fairholme, with Earlsferry, made up the Nathaniel Harper Homes owned and run by the government of Western Australia. Fairholme continued to provide out of home care in the Guildford premises, with residents gradually being relocated into modern premises from 1982. All children had been relocated by 1984. The Fairholme property is no longer used for out of home care.

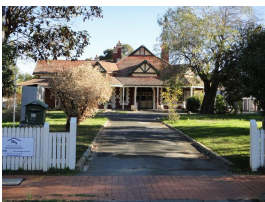
Fairholme was one of two Nathaniel Harper Homes owned and run by the government of Western Australia. It was opened by the Minister for Health, Dame Florence Cardell Oliver, on 27 September 1952.

Nathaniel Harper, whose child had Down Syndrome, donated money to the Mental Hospitals Department to stimulate what has been called a 'modest beginning of a new era in service provision' by the State for children with intellectual disabilities. Nathaniel Harper Homes were the 'first public sector residential facility' since the Claremont Mental Hospital began in 1903. Nathaniel Harper Homes were run by nursing staff, with visits from Claremont Mental Hospital psychologists. The Education Department set up a special school for children at the Nathaniel Harper Homes.

The Nathaniel Harper Homes were also involved in 'industrial rehabilitation', which was a type of 'sheltered workshop' employment. The young people and adults at Nathaniel Harper Homes took some of the overflow work from the industrial rehabilitation workshop at the Claremont Mental Hospital. They made glass pipettes and cleaned and re-assembled bottle-tops.

By the 1980s, Fairholme and Earlsferry were better known as separate hostels rather than collectively as the Nathaniel Harper Homes.

Gallery



Fairholme Gates

Description: This is a digital copy of a photograph held by the Heritage Council of Western Australia. It shows Fairholme from the front gates. The photograph was taken by Sian Ferraz.



Fairholme House

Description: This is a digital copy of a photograph held by the Heritage Council of Western Australia. It shows Fairholme from the driveway in front of the porch. The photograph was taken by Melissa Maiden.

More info

Related Entries

Run by

- [Mental Hospitals Department, State Government of Western Australia \(1934 - 1954\)](#)
- [Mental Health Services, State Government of Western Australia \(1954 - 1984\)](#)
- [Authority for Intellectually Handicapped Persons \(1986 - 1993\)](#)

Related Organisations

- [Claremont Mental Hospital \(1903 - 1972\)](#)
Children were transferred from the Claremont Mental Hospital to Fairholme.
- [Earlsferry \(1952 - 1989\)](#)
Earlsferry and Fairholme were opposite each other on the Swan River at Bassendean and Guildford. Together, they were known as the Nathaniel Harper Homes, named after the man who donated £20,000 for residential facilities for children with intellectual disabilities.

Resources

- [Editorial \[intellectual disability\]](#), The Daily News, 6 November 1950
- [Legislative Assembly - Questions on Notice \[Disability Services Commission - Residents in Hostels, Age Range\]](#), Parliamentary Debates (Hansard), 2 April 1996. *Relevance:* 'Legislative Assembly – Questions on Notice [Disability Services Commission – Residents in Hostels, Age Range]' reported that residents aged 25-54 years lived at Fairholme

Records

For more information and to access your records, follow the links below:

Records

- [Files - Community Welfare \("A" Series\), State Records Office of Western Australia \(25 August 1908 - 23 December 1990\)](#)
-

You can view this page online by visiting <https://www.findandconnect.gov.au/entity/fairholme/>