

# Cape Bedford Mission

1886 – c. 1896

**Other Names:** • Elim Mission

## Details

---

The Cape Bedford Mission, at Elim, was run by Lutheran Church Missionaries. It opened in 1886 and moved to Hope Valley around 1896.

The Mission was founded by Reverend Johann Flier from Cooper Creek in South Australia. In November 1855 Flier was on his way to found a Mission in Papua New Guinea when he was delayed at Cooktown, in far north Queensland. This led him to establish a Mission near the beach at Elim on Cape Bedford.

Within 10 years the administrative centre of the Mission moved to Hope Valley, some 10 kilometres south.

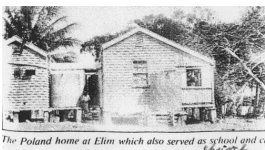
## Gallery

---



**Mission at Elim, north of Cooktown, Queensland**

**Description:** This is a sketch of the Cape Bedford Mission at Elim made by Pastor Poland, a missionary at Cape Bedford Mission. The description provided by the State Library of Queensland reads: "Pastor Poland depicting the arrangements of buildings at the Elim Mission. Elim was settled north of Hope Valley but was found to be too arid for agriculture." This image is undated, the date included is an estimate



**Missionary Poland's house at the Lutheran Mission, Elim**

**Description:** This is an image of missionary Poland's house at the Cape Bedford mission. The caption on the image reads "The Poland home at Elim which also served as school and church". The State Library of Queensland's description of this image reads "W. Poland came to join Schwarz at the Cape Bedford Reserve and stayed until 1909. He and his wife and daughter lived In this house at Elim, that also served as a church and a school. (Information taken from Theile, F. O. One Hundred Years of the Lutheran Church in Queensland, 1938)."

## More info

---

### Chronology

- **Cape Bedford Mission (1886 – c. 1896)**
  - Hope Valley Mission (c. 1896 - May 1942)

- Hope Vale Mission (c. 1950 - 1986)

## Related Entries

### Run by

- [The Lutheran Church of Australia \(1838 - current\)](#)

## Resources

- [Hope Vale](#), Aboriginal and Torres Strait Islander community histories, 2017

## Records

---

For more information and to access your records, follow the links below:

### Records

- [Records of the United Evangelical Lutheran Church in Australia: Hope Vale Mission Board \(1885 - 1975\)](#)
  - [Aboriginal and Torres Strait Islander Affairs Records \(1880s - current\)](#)
  - [Miscellaneous Subject Batches \[Correspondence\] - Aboriginal and Torres Strait Islander Files \(1886 - 1920\)](#)
  - [Correspondence Files \[Offices of the Chief Protector of Aboriginals and Director of Native Affairs\] \(1901 - 1944\)](#)
- 

You can view this page online by visiting <https://www.findandconnect.gov.au/entity/cape-bedford-mission/>