

Industrial School for Girls, Chelmer

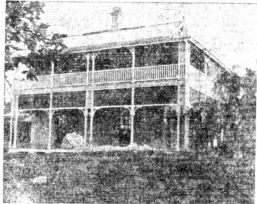
1920 – 1941

Other Names: • Home for Invalid Women and Girls

Details

The Industrial School for Girls, Chelmer, was operated by the Salvation Army. It was opened in 1920 and was licensed under the *State Children Act* 1911. The Home was also registered as a babies nursing home from 1921, however from around 1924 only girls aged 14 to 18 were admitted to the Home, with younger girls sent to the Salvation Army Girls' Home at Yeronga. The industrial school had capacity for about 30 girls at a time. Girls at the home were trained in domestic work and sewing. When girls left the Home by the age of 18 they were placed in employment as domestic servants. From 1932 the Home also admitted adult women with chronic illness or disabilities. No State girls were placed at the Industrial School after 1941. The home officially closed in 1961, however it is not clear if it accommodated younger girls from 1941 to its closure.

Gallery



The recently opened Salvation Army Home for Little Girls at Chelmer, near Brisbane

Description: This is an image of the Salvation Army Industrial School for Girls, Chelmer, that was published in *The Week* on 13 August 1920. It shows a large, two-storey house with wrap-around verandahs on the ground and first floors.



Chelmer, Qld., 1920

Description: This image shows the Industrial School for Girls, Chelmer.

More info

Related Entries

Run by

- [The Salvation Army Australia Eastern Territory \(1921 - 2018\)](#)

Related Legislation

- [State Children Act 1911, Queensland \(1911 - 1966\)](#)

Resources

- Cleland, Sharon, [*Caring for the Children: A history of institutional care provided by The Salvation Army for Australian children and youth \(1893-1995\)*](#), August 2012

Records

For more information and to access your records, follow the links below:

Records

- [Salvation Army Australia, Records of Homes in the former Eastern Territory \(c. 1891 - 1990s\)](#)
-

You can view this page online by visiting <https://www.findandconnect.gov.au/entity/industrial-school-for-girls-chelmer/>