

Santa Marina

1919 – 1930?

Details

Santa Marina, at Waverley, was opened by the State Children's Relief Board in 1919. It was as a home for babies, expectant mothers and mothers with babies. In its first year of operation it housed a total of 123 mothers and 138 babies, for an average of 3 to 6 months. It possibly closed around 1930.

Santa Marina was opened on 1 December 1919. It was one of a number of homes established by the Board under the *Infant Protection Act 1904*. It was intended to keep unmarried mothers together with their babies until the child was weaned, as the State Children's Relief Board was concerned about the very high rate of death amongst 'illegitimate' babies who were placed in babies' homes because their mothers had to support themselves.

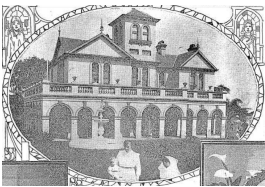
The idea behind Santa Marina was to support mothers to breastfeed for an extended period. Once the baby was weaned the mother could try to find employment that allowed her to keep the child or the baby could be placed in the boarding out system.

Gallery



Santa Marina, Albion-street, Waverley

Description: This is an image showing the opening of the Santa Marina hostel for mothers and babies in Waverley (now Bondi), Sydney, in 1919. It was published in the *Sydney Mail* on 18 June 1919. It shows a large, ornate, two storey house situated in large gardens. At the front of the house is a gathering of approximately 30 people seated facing a speaker, the gardens have been decorated with flags, and tables and chairs have been set up, presumably for the official opening of the home.



Front View of Santa Marina

Description: This is an image of Santa Marina hostel for mothers and babies at Waverley (now Bondi), Sydney, in 1919. It shows the front of the large, ornate, two-storey house, with the matron and a nurse holding a baby standing in front of the house. This image was originally published in the *Sunday Times* on 28 September 1919 in an article containing additional photos of the dormitories, babies, and staff at the hostel.

More info

Related Entries

Run by

- [State Children's Relief Board \(1881 - 1923\)](#)
Date: 1919 - 1923
- [Child Welfare Department, State Government of New South Wales \(1923 - 1970\)](#)
Date: 1923 - 1930?

Related Legislation

- [Infant Protection Act 1904, New South Wales \(1904 - 1923\)](#)

Records

For more information and to access your records, follow the links below:

Records

- [Departmental Records relating to State Wards, New South Wales \(1918 - current\)](#)
-

You can view this page online by visiting <https://www.findandconnect.gov.au/entity/santa-marina/>