

# Montrose Maternity Hospital

c. 1920 – c. 1935

**Other Names:**

- Montrose Maternity Hospital
- Montrose Infants' Home
- Montrose

## Details

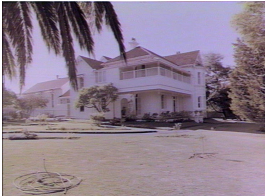
---

Montrose was a house in Burwood that was turned into a maternity hospital and infants' home in 1920 by the State Children's Relief Department, caring for unmarried mothers and their babies, and infants who were state wards. By 1936 it had been converted to Montrose Hostel by the Child Welfare Department.

Montrose was one of a number of homes established by the State Children's Relief Board under the *Infant Life Protection Act* 1904 to assist young unmarried mothers and to nurse 'illegitimate' babies. The State Children's Relief Board hoped that keeping babies together with their mothers would help the mothers breastfeed and get the babies through the first months and years of life. Babies whose mothers could not nurse them were extremely vulnerable, leading to high rates of infant mortality. The mothers in the home could also help care for infants who had been separated from their own mothers and were in state care.

## Gallery

---



**Montrose Child Protection Unit Burwood**



**Montrose Maternity Hospital, Burwood: "A" ward, 4 beds**



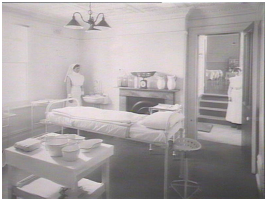
**Montrose Maternity Hospital, Burwood**

---



**Montrose Maternity Hospital, Burwood: "B" ward, 8 beds**

---



**Montrose Maternity Hospital Burwood: Operating theatre**

---

## More info

---

### Chronology

- **Montrose Maternity Hospital (c. 1920 – c. 1935)**
  - Montrose Hostel (1936 - c. 1949)
  - Montrose Infants' Home (c. 1949 - c. 1978)
  - Montrose Child Protection Centre (c. 1978 - c. 2009)

### Related Entries

#### Run by

- [State Children's Relief Board \(1881 - 1923\)](#)  
Date: 1920 - 1923
- [Child Welfare Department, State Government of New South Wales \(1923 - 1970\)](#)  
Date: 1923 - 1935
- [Department of Youth and Community Services, State Government of New South Wales \(1976 - 1988\)](#)

#### Related Organisations

- [St Anthony's Home Croydon \(1925 - 1980\)](#)  
Department of Youth and Community Services [II] staff referred children from Montrose Child Protection Unit to St Gerard's Home, which was part of St Anthony's Croydon

## Records

---

For more information and to access your records, follow the links below:

### Records

- [Departmental Records relating to State Wards, New South Wales \(1918 - current\)](#)
- 

You can view this page online by visiting <https://www.findandconnect.gov.au/entity/montrose-maternity-hospital/>