

# Clairvaux

1969 – 1990s

## Details

---

Clairvaux was established at Katoomba by the Child Welfare Department in 1969. It began as a home for boys who were described having intellectual disabilities. It has a special school on site. Clairvaux was closed down in the 1990s.

Clairvaux was purchased in 1967 to increase accommodation for wards of the state and boys with disabilities (referred to at the time as 'intellectually handicapped'). Accommodation at the existing state institutions at Brush Farm, Mittagong Farm Home and Werrington Park was becoming strained. The home was opened in 1969 with 24 boys. There was a special school on the site, operated by the Education Department.

Clairvaux was closed down in the 1990s and in 2014 serves as accommodation for a range of community-based organisations.

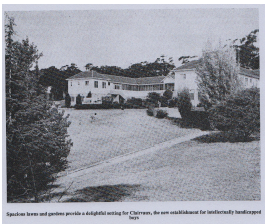
## Gallery

---



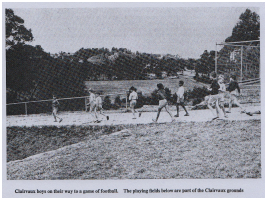
**Clairvaux**

**Description:** This photo is undated, the date included is an estimate.



**Spacious lawns and gardens provide a delightful setting for Clairvaux, the new establishment for intellectually handicapped boys [original caption]**

**Description:** This is a copy of an image that appeared in the Child Welfare Department of New South Wales Annual Report of 1969.



**Clairvaux boys on their way to a game of football. The playing fields below are part of the Clairvaux grounds**

**Description:** This is a copy of an image that appeared in the Child Welfare Department of New South Wales Annual Report of 1969.

---

## More info

---

## Related Entries

### Run by

- [Department of Youth and Community Services, State Government of New South Wales \(1973 - 1975\)](#)
- [Child Welfare Department, State Government of New South Wales \(1923 - 1970\)](#)
- [Department of Youth and Community Services, State Government of New South Wales \(1976 - 1988\)](#)
- [Department of Community Services, State Government of New South Wales \(1992 - 2009\)](#)  
Date: 1992 - 1990s
- [Department of Family and Community Services, State Government of New South Wales \(1988 - 1991\)](#)

## Resources

- Boyle, Brian, *The Child Welfare Schools: Recollections of these unique schools and the men and women who taught in them often under considerable difficulty*, 1996

## Records

---

For more information and to access your records, follow the links below:

### Records

- [Departmental Records relating to State Wards, New South Wales \(1918 - current\)](#)
- 

You can view this page online by visiting <https://www.findandconnect.gov.au/entity/clairvaux-2/>