

Lawson Cottage

1927 – 1930

Details

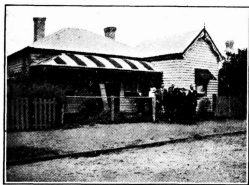
Lawson Cottage in the Blue Mountains, was established by the Sydney City Mission in 1927. It housed groups of girls and boys from Sydney alternately for short periods. In 1929, Stonehaven at Springwood opened as a girls' Home and boys remained at Lawson. This soon reversed and girls returned to Lawson Cottage until the girls' home, Mt Gibraltar, was opened at Bowral in 1930.

Lawson Cottage was originally used by the Sydney City Mission as a Missionaries Rest Home. It was located at Lawson the Blue Mountains, west of Sydney. In the years after World War I, the cottage was rarely used. After an unsuccessful attempt to sell the property, the Mission's Council decided to use it for the care of children.

A newspaper article from 1927 states that the cottage of eight rooms was named "Stonbee" after the superintendent of South Sydney Mission, Harold Stonham Bowden, and Mr. Beeson of Turramurra.

Begun as something of an experiment, the Lawson Cottage proved very successful and led to the establishment of much larger and grander children's homes for long-term care. The first residents, seven young girls, arrived in April 1927 and stayed for three months. They were followed by a group of boys and a pattern of caring for girls and boys alternately developed. In 1929 Stonehaven at Springwood was opened as a girls' home, while boys remained at Lawson. This arrangement was soon reversed, and the girls returned to Lawson until Mt Gibraltar at Bowral was opened.

Gallery



South Sydney Mission Rest Home at Lawson.

South Sydney Mission Rest Home at Lawson

Description: This is an image of South Sydney Mission's Lawson Cottage, also known as "Stonbee", that was published in *The Methodist* in December 1927.

More info

Related Entries

Run by

- [Sydney City Mission \(1862 - 1996\)](#)

Date: 1927 - 1930

Related Organisations

- [Mission Australia \(1996 - current\)](#)

- [Stonehaven \(1929 - 1951\)](#)

Stonehaven took girls from Lawson Cottage in 1929, then boys from Lawson Cottage in 1930.

- [Mt Gibraltar \(1930 - 1974\)](#)

Mt Gibraltar took girls from Lawson Cottage in 1930

Records

For more information and to access your records, follow the links below:

Records

- [Sydney City Mission records, 1862-1983, including minute books and historical papers \(1862 - 1983\)](#)
-

You can view this page online by visiting <https://www.findandconnect.gov.au/entity/lawson-cottage/>