

Scone Farm School

c. 1959 – 1982

Other Names: • Tooloogan Vale

Details

Scone Farm School at Scone was established in 1959 by Dr Barnardo's in Australia. It was a replacement for the previous Dr Barnardo's farm home, Mowbray Park at Picton. Scone Farm School, also known as Tooloogan Vale, trained boys aged 15 to 16 years in farming skills. The school took migrant children and later admitted Australian-born children. It closed in 1982.

Scone Farm School was established on a 1200 acre property around 1959.

Each year 12 “needy” boys lived at Scone Farm School. They participated in a comprehensive farm training course before Barnardo's assisted most of them in finding employment on farms.

By the late 1970's, Australian-born young men had to apply in writing for the course by October of the previous year.

The Farm School submitted items in to shows, including the Royal Easter show, and successfully won hundreds of ribbons.

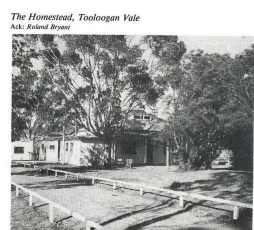
Scone Farm School's programme ended in December 1981, because the farm had operated at a loss for the previous 16 months due to the 1980 drought in the Hunter Valley. The farm was sold in 1982.

Gallery



Tooloogan Vale

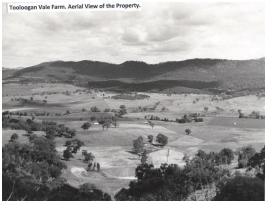
Description: This is an image from the Nardy - Old Boys & Girls Reunion Club website Tooloogan Vale - Scone album. It shows the sign for Scone Farm School. This photo is undated, the date included is an estimate.



The Homestead, Tooloogan Vale
Ack: Roland Bryant

The Homestead, Tooloogan Vale. Ack: Roland Bryant

Description: This is an image from the Nardy - Old Boys & Girls Reunion Club website Australia Album. This image shows the homestead at Scone Farm School. This photo is undated, the date included is an estimate.



Tooloogan Vale Farm. Aerial View of the Property.

Description: This is an image from the Nardy - Old Boys & Girls Reunion Club website Australia Album. This image provides an aerial view of part of the Scone Farm School property. This photo is undated, the date included is an estimate.



[Scone Farm School]

Description: This is an image from the Nardy - Old Boys & Girls Reunion Club website Australia Album. This image shows the homestead at Scone Farm School. This photo is undated, the date included is an estimate.

More info

Chronology

- Mowbray Park (1929 - 1959)
 - **Scone Farm School (c. 1959 – 1982)**

Related Entries

Run by

- [Dr Barnardo's Homes \(Australia Branch\) \(1883 - 1966\)](#)
Date: 1959 - 1966
- [Dr Barnardos in Australia \(1966 - c. 1995\)](#)
Date: 1966 - 1982

Resources

- [Welfare official arrives](#), The Sydney Morning Herald, 20 September 1966

Records

For more information and to access your records, follow the links below:

Records

- [Barnardos Australia, Records \(c. 1883 - current\)](#)
 - [Dr. Barnardo's in Australia, records \(c. 1921 - 1985?\)](#)
-

You can view this page online by visiting <https://www.findandconnect.gov.au/entity/scone-farm-school-2/>