

Airlie

1914 – c. 1971

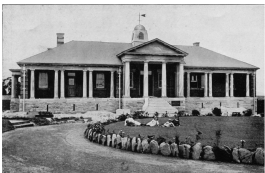
Other Names: • Administrative Block

Details

Airlie was opened as part of the Burnside Presbyterian Orphan Homes in December 1914 at North Parramatta. It was originally the Administrative Block but in 1917 became a playschool for 40-50 children. By 1919 it was a home for kindergarten-aged children. It was a boys' home in the 1930s. In 1971 it was converted to a kindergarten.

Airlie closed in 1941, as Burnside was evacuated for the duration of the war. When the children returned in 1945 it became a toddlers' centre, and in 1946 was a preschool. Artist Pixie O'Halloran painted murals for kindergarten children on its walls in 1949. In 1971 the kindergarten was opened to the general public. From 1977 it has been operated by the Kindergarten Union (KU).

Gallery



Airlie

Description: This is a photo of Airlie at Burnside. It shows a large single-storey stone building with columns around the perimeter, and curved stone steps leading up to the entrance. Several children can be seen lying on the lawn in front of the home. This image was published in a document called 'Aerlie', which was created by UnitingCare Burnside to provide historical information about the home. This photo is undated, the date included is an estimate.

More info

Related Entries

Run by

- [Burnside Presbyterian Orphan Homes \(1911 - 1955\)](#)
Airlie was one of the cottages at Burnside Presbyterian Orphan Homes
- [Burnside Presbyterian Homes for Children \(1955 - 1978\)](#)
Airlie was one of the cottages at Burnside Presbyterian Homes for Children

Records

For more information and to access your records, follow the links below:

Records

- [Records held by Burnside Archives \(1911 - current\)](#)
-

You can view this page online by visiting <https://www.findandconnect.gov.au/entity/airlie-2/>