

Charlton Memorial Home

1942 – 1966

Other Names:

- Archdeacon Charlton Memorial Home
- Charlton Boys' Home, Glebe

Details

Charlton Memorial Home, also known as Charlton Boys' Home, was established in Glebe by the Home Mission Society in 1942. It was a Church of England home that primarily dealt with boys who had appeared in Children's Courts, but also took girls. It held up to 40 young people, ranging in age from seven to 18. It was located in a building called 'Avona', which had previously been part of the Church Rescue Home. In 1966 Charlton Memorial Home moved to Ashfield.

The Home was named after Archdeacon Charlton, who a former head of the Home Mission Society. A 1945 *Sydney Morning Herald* article said Charlton home was established for children attending the Children's Court and was for "child delinquents and 'those who might become such without proper care and education'."

According to its annual reports, the Home Mission Society ran a chaplaincy at the Children's Courts, supporting non-Catholic children and their families during hearings and providing support to boys and girls who were placed on probation, or sent to reformatories.

In 1944 the Home Mission Society said Charlton was an example of its 'Special Centre Work', which was supporting children appearing before the Children's Courts. The Society stated

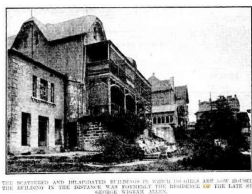
... many of the cases which come before the Court can only be helped by taking them out of the homes in which they have become a social problem.

The Society said that Charlton was open day and night but boys and girls rarely absconded. Children were referred to it by the police, the Child Guidance Clinic and the Court.

Charlton began in Avona Avenue in Glebe, but expanded to take in neighbouring properties at the corner of Forsyth Street and Glebe Road (Charlton Way). By 1959 it had its own printery and workshop.

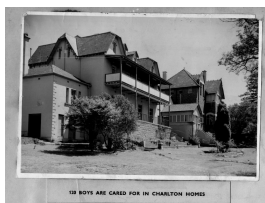
Charlton Boys' Home Glebe was sold in 1966 and moved to Ashfield, to what had been Milleewa.

Gallery



C. of E. Girls' Homes at Glebe Point, for the transfer of which to Carlingford an appeal has been launched.

Description: This image shows buildings of the Church of England Girls' Homes in Glebe. The building in the foreground is Avona, then Tress-Manning behind it, and Strathmore in the background. Girls from the Home can be seen sitting on the steps outside of Avona. Avona and its grounds later became the Charlton Memorial Home. This image was published in The Sydney Morning Herald on 11 May 1928. The description reads: "The scattered and dilapidated buildings in which 150 girls are now housed. The building in the distance was formerly the residence of the late Sir George Wigram Allen."



Charlton Boys Home - Glebe

Description: This is a photo of the Charlton Boys Home at Glebe. It shows two large two-storey houses next to each other. The caption published with the photos reads "120 boys are cared for in Charlton Homes". This photo is undated - the date included is an estimate.

More info

Chronology

- **Charlton Memorial Home (1942 – 1966)**
 - Charlton Boys' Home, Ashfield (1966 - 1970s)
 - Robinson House (1970s - c. 1991)

Related Entries

Run by

- [Home Mission Society of the Anglican Diocese of Sydney \(1857 - 1997\)](#)
The Homes and Hostels Committee of the Home Mission Society ran Charlton Boys' Home at Glebe.

Related Organisations

- [Charlton Boys' Home, Bowral \(1961 - 1971\)](#)
- [Avona Hostel \(1947 - c. 1962\)](#)
Avona Hostel was situated next to Charlton Memorial Home.

Resources

- [Glebe Care Homes for Children](#), The Glebe Society, 23 June 2013

Other Resources



Title: Cover of Anglican Home Mission Society 'Action'

Type: Image

Date: December 1966

[Details](#)

Records

For more information and to access your records, follow the links below:

Records

- [Anglicare Children's Homes, Foster Care and Out-of-Home Care Records \(1932 - 2010s\)](#)
- [Correspondence files, single number series with 'B' \[Child Endowment\] prefix \(1904 - 1974\)](#)

You can view this page online by visiting <https://www.findandconnect.gov.au/entity/charlton-memorial-home/>