

Nazareth House, Camberwell

1929 – 1975

Details

Nazareth House in Camberwell opened in 1929 as a Home for the aged. From 1953 and 1956, Nazareth House received 53 female child migrants from Britain. From 1958, Nazareth House also received girls and boys from Victoria. Residential care for children at Nazareth House ceased in 1975.

Nazareth House opened in 1929, originally as an institution for the care of the aged.

The Sisters of Nazareth received a grant from the Victorian government in February 1949. The money funded building works at Nazareth House in Camberwell, where it was envisaged that 150 migrant girls from the United Kingdom would be accommodated. In 1953, a new wing was added to Nazareth House to accommodate migrant girls. Between 1953 and 1956, Nazareth House received 53 female child migrants from Britain.

From 1958, Nazareth House also received girls and boys from all over Victoria. In 1962, only 6 child migrants remained at Nazareth House Camberwell. The institution was approved to accommodate wards of state in 1962 – girls aged between 2 and 15, and boys aged between 2 and 9. According to the Finding Records website, this enabled some Catholic siblings to remain together. The website also states that in 1962, 'capacity was limited to about 60 children in congregate care in the large complex that still also housed the elderly'.

Residential care for children at Nazareth House Camberwell ceased in 1975. The Sisters increased its commitment to providing aged care from that time onwards.

One submission to the 2004 Senate Inquiry from a former child migrant described her time at Nazareth House Camberwell as 'a very painful period in my life to talk about in fact I still have nightmares especially when I have to revisit memories. I have come to realise that we were never children. We were an unpaid workforce, with no reward just punishment' (Submission 169).

Another submission described abuse in Nazareth House including force feeding, beatings and the use of restraints on girls who lived there (Submission 5).

An article from 2015 contained an allegation that the Sisters of Nazareth were impeding investigations into historic sexual abuse by nuns against children who lived in Nazareth House Camberwell (King, 2015).

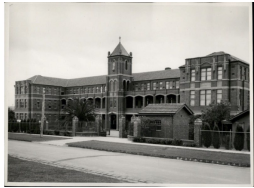
In 2013 the site houses Nazareth Care Camberwell, an aged care facility run by the Sisters of Nazareth.

Gallery



Nazareth House, Camberwell

Description: There is a gallery of images of Nazareth House, Camberwell published in the 'Photos' section of the website: <http://www.nazhousecamberwell.com.au/>



Nazareth House, Roman Catholic, East Camberwell, Victoria

Description: This is a copy of a photograph from the National Archives of Australia's Immigration Photographic Archive collection. The caption is: New, ultra-modern home for Catholic migrant children from the UK is Nazareth Children's Home, East Camberwell Vic. It is conducted by Sisters of Nazareth. Home can accommodate 150 children.



Immigration- Child migration Schemes - Nazareth House, Roman Catholic, East Camberwell, Victoria

Description: This is a copy of a photograph from the National Archives of Australia's Immigration Photographic Archive collection. The caption is: New, ultra-modern home for Catholic migrant children from the UK is Nazareth Children's Home, East Camberwell Vic. It is conducted by Sisters of Nazareth. Home can accommodate 150 children.

More info

Related Entries

Run by

- [Sisters of Nazareth \(1888 - current\)](#)

Related Events

- [Fact-Finding Mission on Child Migration \(1956\)](#)
- [Child Migration Programmes Investigation, UK Independent Inquiry into Child Sexual Abuse \(2017 - 2018\)](#)

Related Concepts

- [Child Migration \(1800s - 1970s\)](#)

Resources

- Immigration Museum, [Stolen childhoods](#), 2012
- Stevans, Leesa, [Submission no 5 to the Senate Inquiry into Children in Institutional Care](#), 2005
- Taylor, Anne, [Submission no 169 to the Senate Inquiry into Children in Institutional Care](#), 2005
- Independent Inquiry Child Sexual Abuse, [Child Migration Programmes Investigation Report](#), March 2018

Records

For more information and to access your records, follow the links below:

Records

- [Nazareth House, Camberwell - Admission and Discharge Registers, Personal Records \(1953? - 1975?\)](#)

- [Commonwealth Child and Youth Migration Records \(1901 - 1983\)](#)
-

You can view this page online by visiting <https://www.findandconnect.gov.au/entity/nazareth-house-camberwell-2/>